

GFTuner: Intuitive Motion Control

gevasol Ping

January 2023

**Motion & power
control systems:**

- Feasibility studies
- Design
- Optimization



Auto Tuning

A new and revised Graphical User Interface (GUI) for the GFT line of drives

GFT released a new GUI for its GFTuner—allowing user-friendly control.

The new GFTuner is a Windows-based tool to set up and tune any GFT drive. It enables full auto-tuning and control capabilities far beyond other tools in the motion control market.

With the new GUI, control engineers are independent when studying, designing, and building intelligent power and motion control systems.

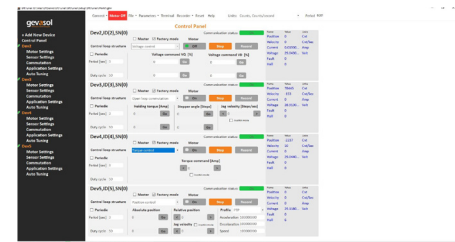
Features

- Auto-tune current, speed, and position loop for high performance.
- Manual tuning of each channel.
- Connect to multiple GFT drives through various protocols (EtherCAT, CAN, RS232, RS422).
- Test the drive performance.
- High-resolution recording.
- Intuitive GUI for easy control of all functions.

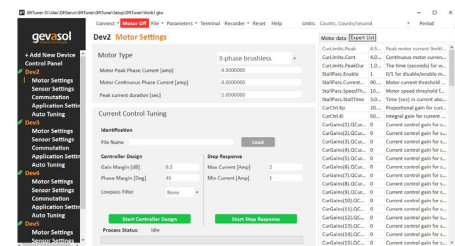
Contact us:

gevasolmotion@gevasol.com

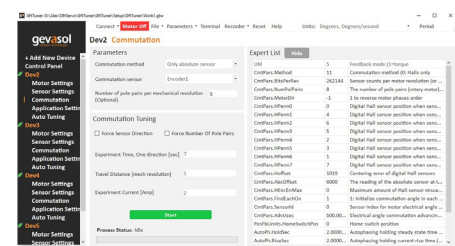
Tel: +972-8-9428820



Control Panel



Motor Settings



Communication

gevasol
feedback technologies

www.gevasol.com/motion-control/